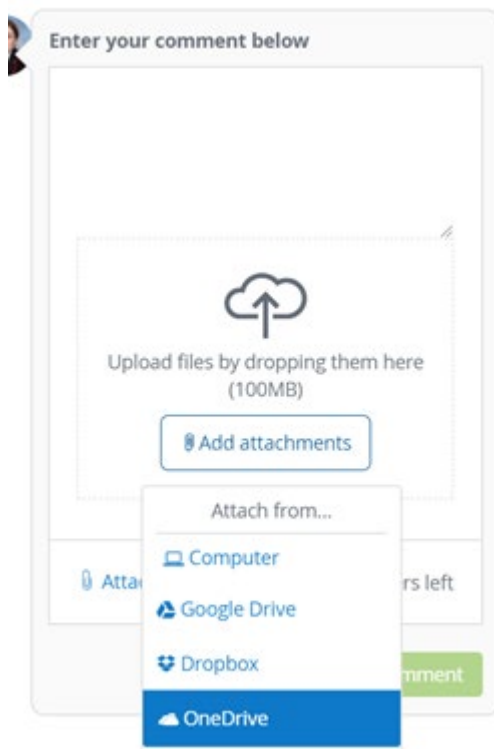


How To Upload Work From Your OneDrive To SMHW [On Smartphone]:

On SMHW, where you can post a comment on your work, you should see an **Attach File** option.



Clicking **Attach File** will then give you multiple options. Select **OneDrive**.

From here you will see your **OneDrive** files and folders. Simply find the file you wish to upload and then click **Open** at the bottom of the page.

You should then see your document attached in the comment box. Click **Post comment** to finish uploading your file.

